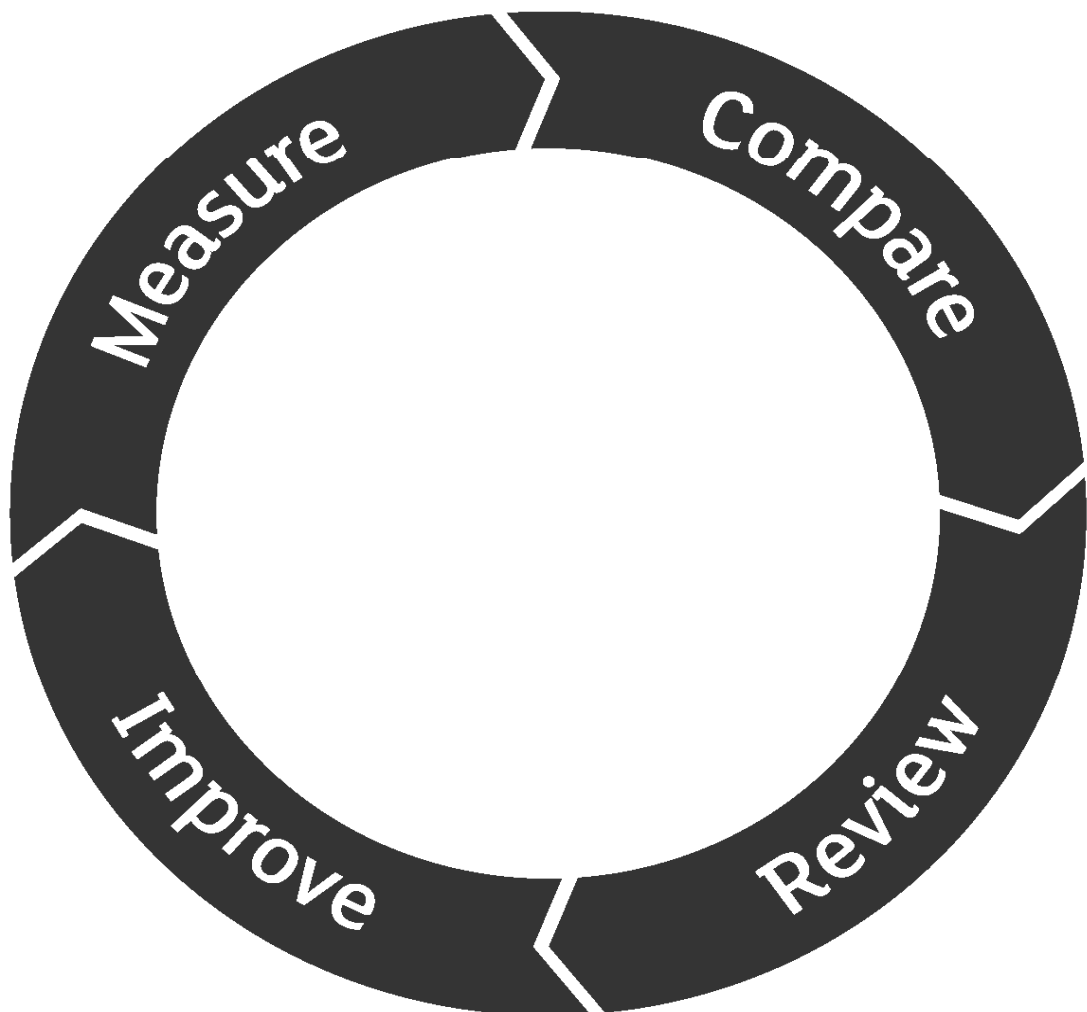


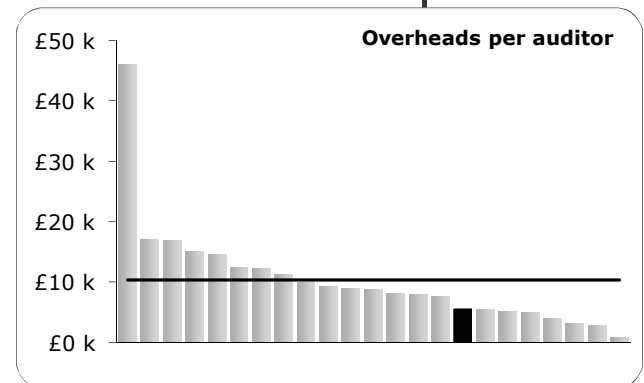
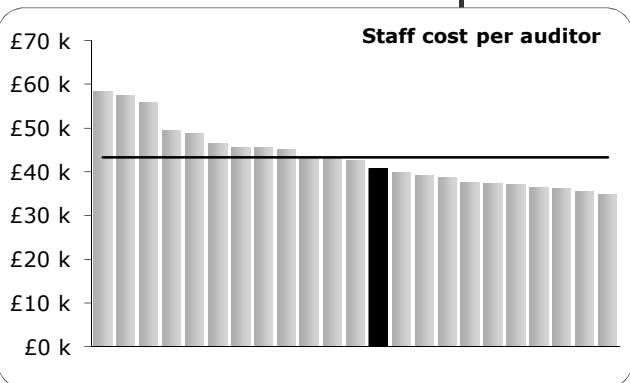
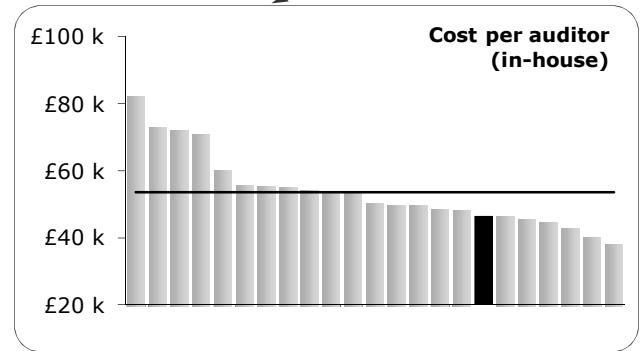
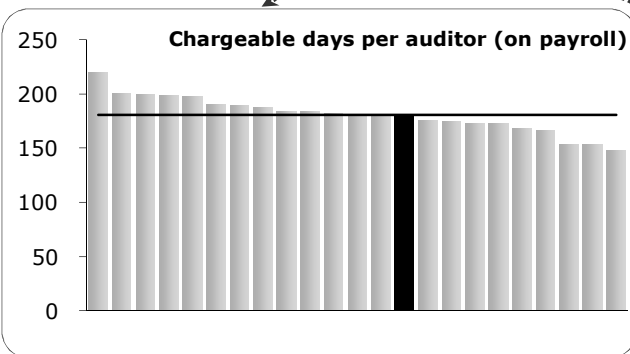
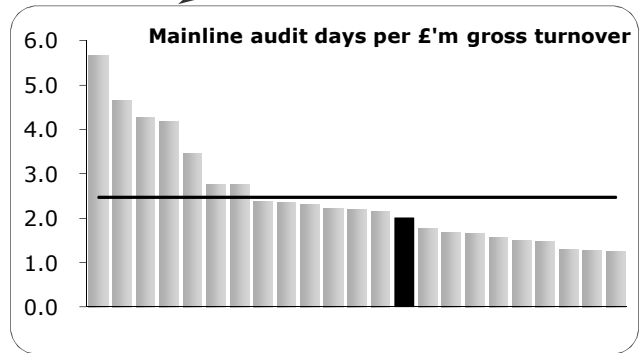
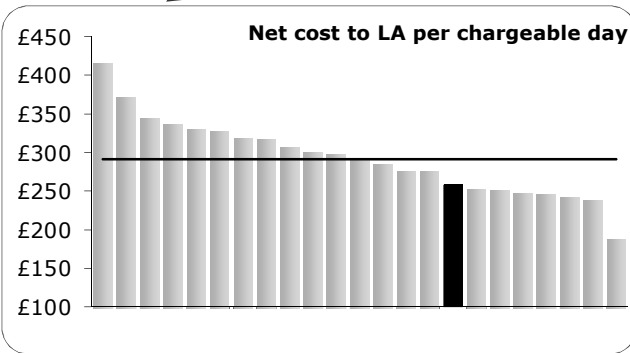
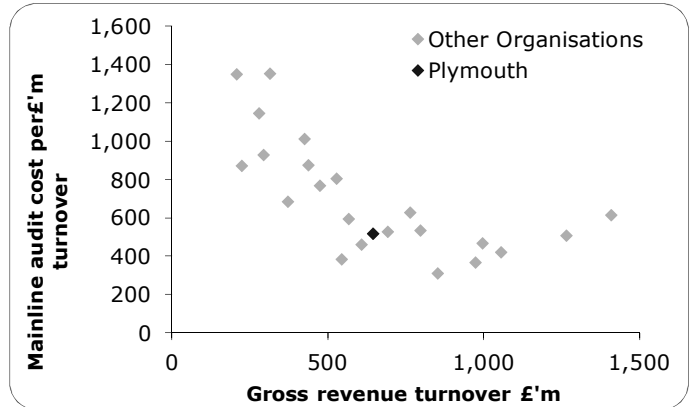
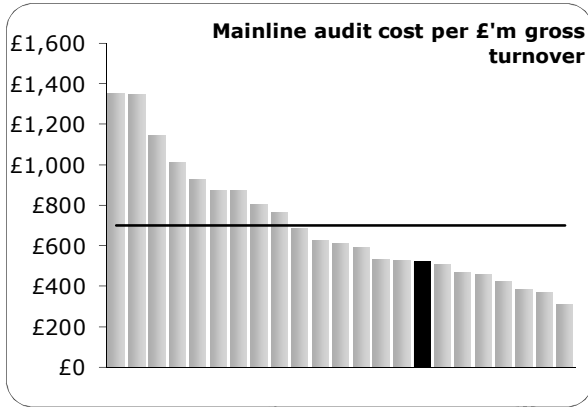
Information Services

# audit benchmarking club

2016 - Plymouth Draft Report

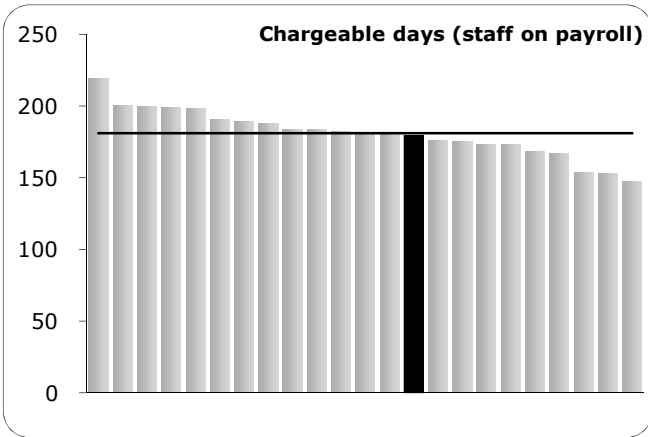


# 2015/16 Actuals



# Chargeable Days per Auditor

2015/16 Actuals



	FTE
Staff (payroll)	7.2
Agency staff	0.0

## Chargeable Days - Staff on Payroll

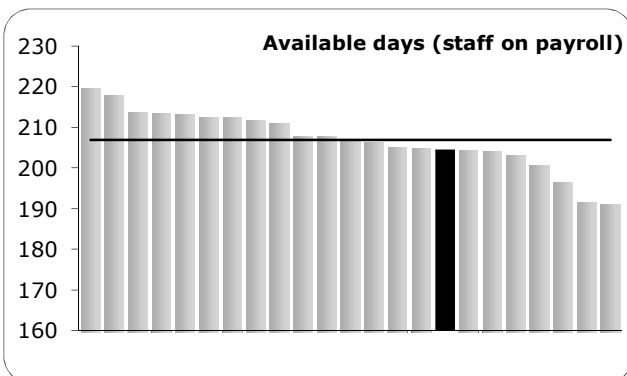
	Days	Days/ FTE	Avg.
<b>Total days pa</b>	1,896	262.0	262.0
<b>Non-productive days:</b>			
Bank holidays	72	10.0	9.8
Annual leave	184	25.4	30.4
Special leave	38	5.3	1.3
Sickness	90	12.4	5.4
Training	32	4.4	8.3
<b>Available days</b>	<b>1,479</b>	<b>204.4</b>	<b>206.9</b>
Other non-chargeable days	181	25.1	27.3
<b>Chargeable days</b>	<b>1,298</b>	<b>179.4</b>	<b>180.8</b>

## Agency Staff Days

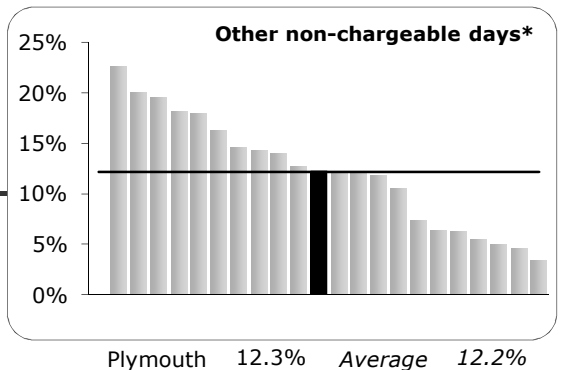
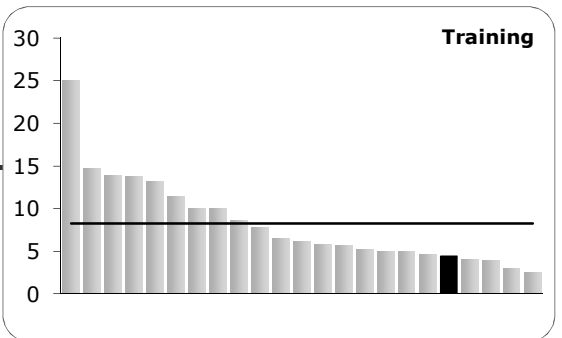
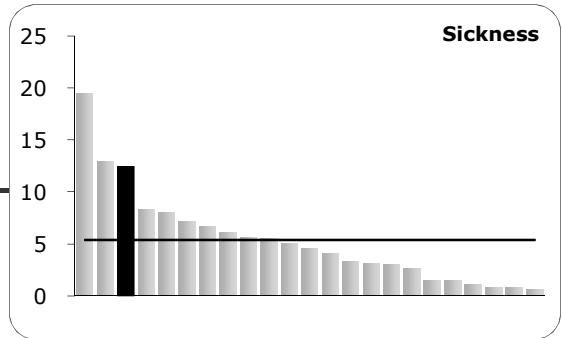
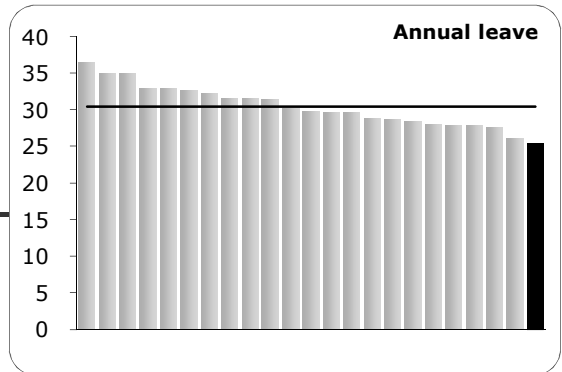
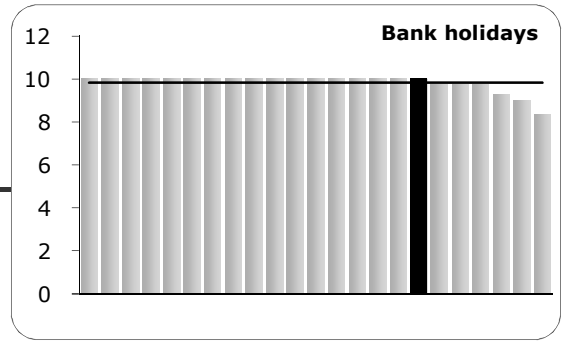
	Days
Total agency staff days	0
Non-chargeable days	0
Chargeable agency staff days	0

## Total Chargeable Days (In-House)

	Days
Total days	1,298



## "Non-chargeable days"



Plymouth 12.3% Average 12.2%

\*This is displayed as a percentage of all available days, including agency staff and bought-in audit.

# Overhead Costs - 2015/16 Actuals

£'k per FTE

	£'k	£'k/FTE	Avg.
Transport & travel	9	1.2	0.3
Other running costs	10	1.4	1.3
Accommodation	10	1.4	1.9
IT	11	1.5	1.9
Other central charges	0	0.0	3.3
<b>Total</b>	<b>40</b>	<b>5.5</b>	<b>10.4</b>

